



## FEATURES

- Easy interface & factory pre-configured
- Programmable control inputs and outputs
- Approvals for use in Hazardous Areas

## BENEFITS

- ▶ Works out of the box, reduce installation cost
- ▶ Transmits flow rate, total, density or temperature
- ▶ Certified for use in nearly all plant environments

## SPECIFICATIONS

Display:	back-lit LCD screen 132 x 32 dot Programmed via front keyboard or TRICOR configurator (Modbus)
Supply Voltage:	24 V DC, $\pm 20\%$ or 90 ... 264 V (version dependent)
Power Consumption:	max. 13 W (AC), 4 W (DC)
Interfaces:	RS485 (Modbus RTU), HART® Foundation Fieldbus®
Housing Material:	Aluminum option: 1.4404 [AISI 316L]
Protection Class:	IP65 (IP66/IP67 on request)

## ANALOG OUTPUT

Current Outputs (2x):	4 ... 20 mA passive
Output Value (programmable):	flow, total mass, total volume, density, temperature

## PULSE OUTPUT

Frequency Range:	0.5 - 10,000 Hz
Output Signal:	active push-pull output for flow rate

## STATUS IN- AND OUTPUT

Status Output:	push pull programmable in TOTAL mode: 0.5 - 100 Hz in FREQUENCY mode: 0.5 - 10,000 Hz programmable
Control Input:	

## ANALOG INPUT (OPTION):

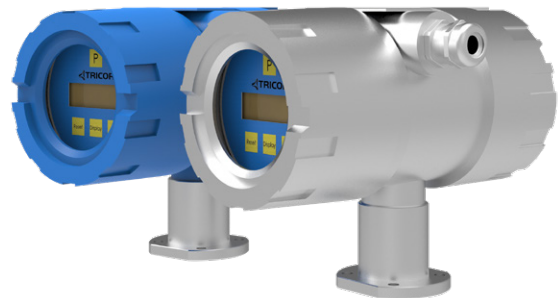
Input Type:	4 ... 20 mA active for two-wire passive pressure sensor
-------------	--

## TEMPERATURE

Ambient Temperature (AC):	-40 °C ... +50 °C [-40 °F ... +122 °F]
Ambient Temperature (DC):	-40 °C ... +70 °C [-40 °F ... +158 °F]
Storage and Transport:	-40 °C ... +80 °C [-40 °F ... +176 °F]

## CONNECTIVITY

Electrical Connections:	cage clamp terminals
-------------------------	----------------------

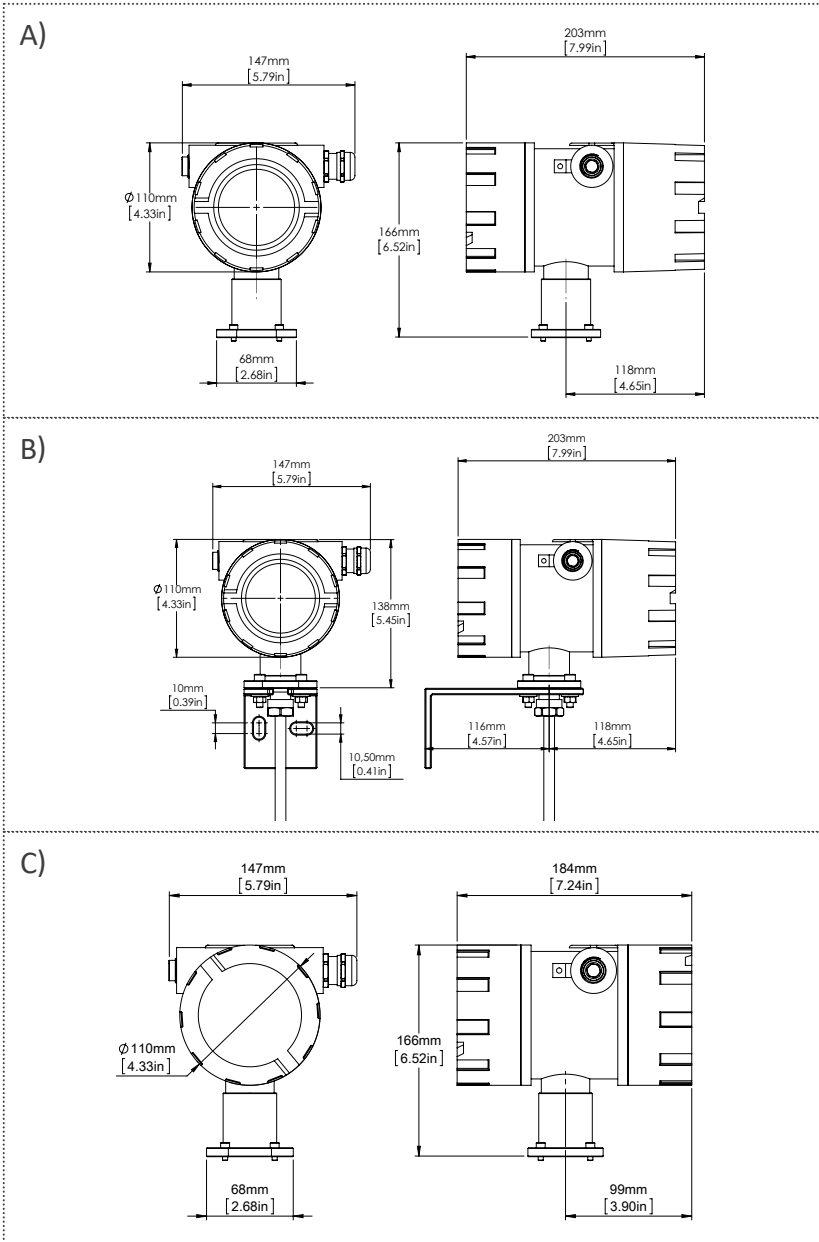


Compact Version



Remote Version (wall mount)

Original KEM/AWL document: TCE\_8x00\_Compact\_Remote\_CLASSIC\_F\_EN\_180720\_E001 | Copyright KEM/AWL, Subject to change without notice



## METER DIMENSIONS AND WEIGHTS

### A) Meter-Mount Electronics

### B) Wall-Mount Electronics

Weight: aluminum diecast housing:  
3.8 kg [8.4 lb] with 3 m cable  
1.4404 [AISI 316L] housing:  
6.15 kg [13.56 lb]

### C) Meter-Mount Electronics with blind cover

## APPROVALS & CERTIFICATIONS

### Hazardous area (Ex)

ATEX (Ex)	Zone 1: Group IIC or IIB, T2...T4
ATEX (Exn)	Zone 2: II 3G Ex nA IIC T2...T4 Gc
IECEX (Ex)	Zone 1: Group IIC or IIB, T2...T4
cCSAus (Ex1) <sup>1)</sup>	Class 1, Division 1: Group A, B, C, D or C, D, T2...T4
ATEX + IECEX + cCSAus triple approval (Ex3) <sup>1) 2)</sup>	Zone 1: Group IIC or IIB, T2...T4 Class 1, Division 1: Group A, B, C, D or C, D, T2...T4
EAC (TR-CU) <sup>1)</sup>	Group IIC or IIB, T2 ... T4

### EMC

EN 61000-6-4

EN 61000-6-2

<sup>1)</sup> Ex1, Ex3, EAC (TR-CU) only for aluminum housing.

<sup>2)</sup> Only for remote electronics.