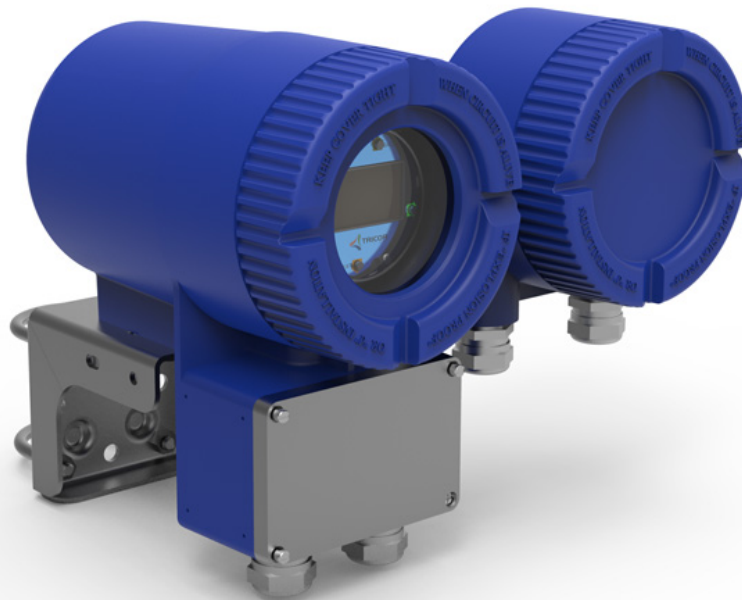


Safety Information

TCE_8501_Safety_M_EN_170308_E001

f



TCE 8501 DSP

TRICOR Coriolis Mass Flow Transmitter

Manual-Version

TCE_8501_Safety_M_EN_170308_E001

SW-Version

This manual is valid for

Main SW: Mv3.40 and higher

Display SW: Dv3.40 and higher

Index

1.	CSA INTERNATIONAL	4
1.1.	Flow Sensor in Class I, Division 1 (Intrinsic Safety); Transmitter in Class I, Division 2 (Non-Incendive) Connect a TCM flow sensor to the TCE 8501 Transmitter per the diagram.	4
1.2.	Flow sensor in Class I, Division 1f (Intrinsic Safety); Transmitter in Class I, Division 1 (Explosionproof) Connect a TCM flow sensor to the TCE 8501 Transmitter per the diagram.	6
2.	CONTACT	8

1. CSA International

1.1. Flow Sensor in Class I, Division 1 (Intrinsic Safety); Transmitter in Class I, Division 2 (Non-Incendive)

Connect a TCM flow sensor to the TCE 8501 Transmitter per the diagram.

WARNING!

These products must be installed to meet all applicable local installation regulations such as hazardous location requirements, electrical wiring codes, and mechanical piping codes. Persons involved in the installation must be trained in these code requirements to ensure that the installation takes maximum advantage of the safety features designed into the transmitter.

AVERTISSEMENT

Ces produits doivent être installés pour répondre à toutes les réglementations locales applicables d'installation telles que les exigences zones dangereuses, les codes de câblage électrique et mécanique codes de tuyauterie. Les personnes impliquées dans l'installation doivent être formés à ces codes exigences visant à assurer que l'installation profite au maximum de la sécurité fonctionnalités conçues dans l'émetteur. Explosion hazard - do not disconnect equipment unless power has been turned off or the area is known to be non-hazardous.

AVERTISSEMENT

Risque d'explosion - Ne débranchez pas l'équipement sauf si l'alimentation est désactivé ou la région est connue pour être non dangereux.

Do not open unless area is known to be non-hazardous.

AVERTISSEMENT

Ne pas ouvrir sauf si la zone est connue pour être non dangereux.

To prevent ignition of flammable or combustible atmospheres, disconnect power before removing covers and servicing. Read, understand and adhere to the manufacturer's live maintenance procedures.

AVERTISSEMENT

Pour éviter l'inflammation d'atmosphères inflammables ou combustibles, débrancher l'alimentation avant l'entretien. De lire, de comprendre, et suivre les procédures de maintenance en direct du fabricant.

Ex plosion hazard substitution of components may impair suitability for Class I, Division 2 / Zone 2 or intrinsic safety.

AVERTISSEMENT

Risque d'explosion - substitution de composants peut nuire à la conformité de Classe I, Division 2/Zone 2 ou la sécurité intrinsèque.

NOTE

1. Figure 4 must not be revised without prior CSA approval.
 2. Dust-tight conduit seal must be used when installed in Class II and Class III environments.
 3. Install in accordance with the Canadian electrical code (part 1).
 4. The I.S. ground terminal on the housing must be connected to a suitable ground electrode per CEC; the resistance of the ground path must be less than 1 ohm and the earth ground terminal on the housing must be connected to earth ground. Both ground wires must be connected at all times and must not be removed.
 5. All conduits must be assembled with a minimum of five full threads engagement and thread lubricant applied. Only Fiske Brothers L0113-001 AERO lubricant is allowed.
-

CSA International
 TCE-8501 Transmitter in Class I Division 2 (NI) Area with
 TCM Series Flow Sensor in Class I Division 1 (IS) Area

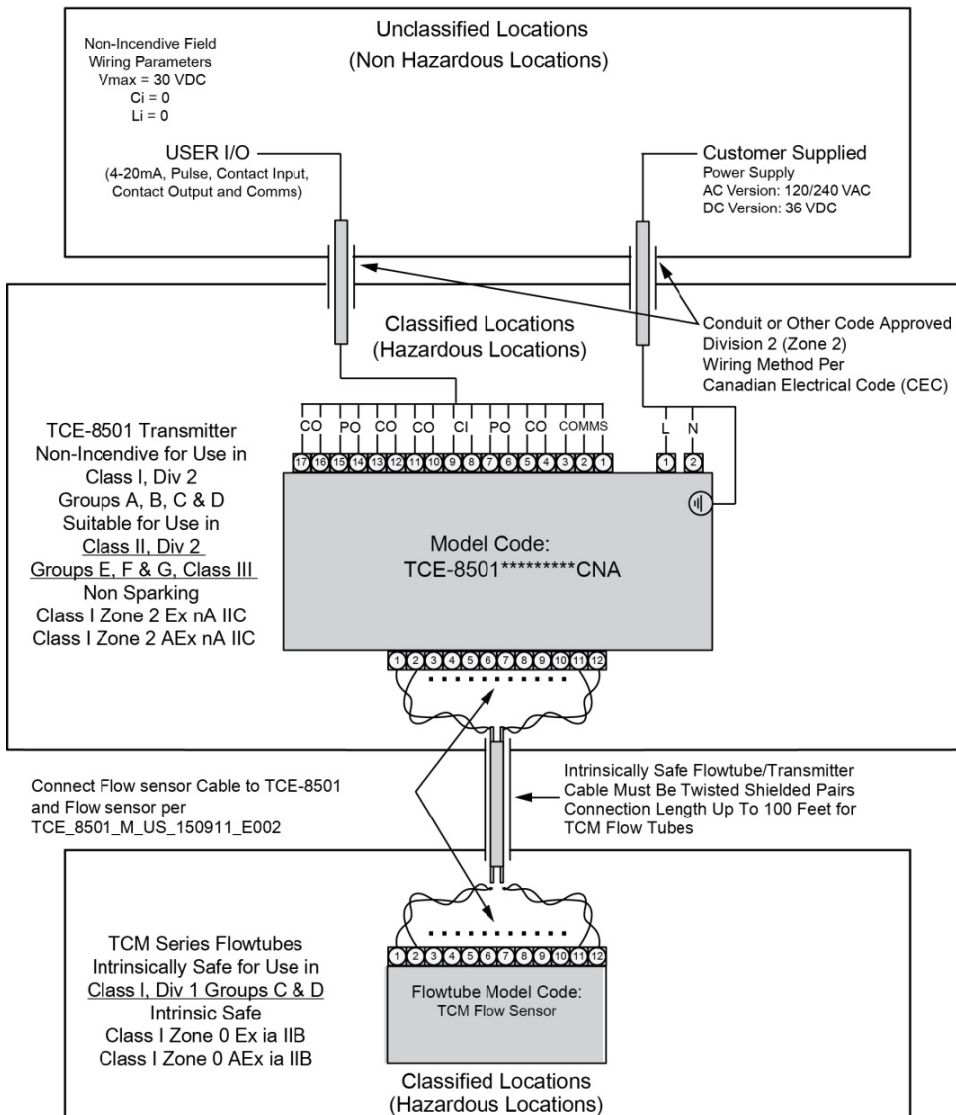


Fig. 4: CSA International, TCM Flow sensor in Class I, Division 1 (Intrinsic Safety) and Transmitter in Class I, Division 2 (Non-Incendive)

1.2. Flow sensor in Class I, Division 1 (Intrinsic Safety); Transmitter in Class I, Division 1 (Explosionproof)

Connect a TCM flow sensor to the TCE 8501 Transmitter per the diagram.

WARNING!

These products must be installed to meet all applicable local installation regulations such as hazardous location requirements, electrical wiring codes, and mechanical piping codes. Persons involved in the installation must be trained in these code requirements to ensure that the installation takes maximum advantage of the safety features designed into the transmitter.

AVERTISSEMENT

Ces produits doivent être installés pour répondre à toutes les réglementations locales applicables d'installation telles que les exigences zones dangereuses, les codes de câblage électrique et mécanique codes de tuyauterie. Les personnes impliquées dans l'installation doivent être formés à ces codes exigences visant à assurer que l'installation profite au maximum de la sécurité fonctionnalités conçues dans l'émetteur.

Explosion hazard - do not disconnect equipment unless power has been turned off or the area is known to be non-hazardous.

AVERTISSEMENT

Risque d'explosion - Ne débranchez pas l'équipement sauf si l'alimentation est désactivé ou la région est connue pour être non dangereux.

Do not open unless area is known to be non-hazardous.

AVERTISSEMENT

Ne pas ouvrir sauf si la zone est connue pour être non dangereux.

To prevent ignition of flammable or combustible atmospheres, disconnect power before removing covers and servicing. Read, understand and adhere to the manufacturer's live maintenance procedures.

AVERTISSEMENT

Pour éviter l'inflammation d'atmosphères inflammables ou combustibles, débrancher l'alimentation avant l'entretien. De lire, de comprendre, et suivre les procédures de maintenance en direct du fabricant. Substitution of components may impair intrinsic safety.

AVERTISSEMENT

La substitution de composants peut compromettre la sécurité intrinsèque.

NOTE:

1. Figure 5 must not be revised without prior CSA approval.
 2. The associated apparatus manufacturer's installation drawing must be followed when installing this equipment.
 3. Dust-tight conduit seal must be used when installed in Class II and Class III environments.
 4. Install in accordance with the Canadian electrical code (part 1).
 5. The I.S. ground terminal on the housing must be connected to a suitable ground electrode per CEC; the resistance of the ground path must be less than 1 ohm and the earth ground terminal on the housing must be connected to earth ground. Both ground wires must be connected at all times and must not be removed.
 6. For gas group A, a conduit seal is required at the conduit entries.
 7. All conduits must be assembled with a minimum of five full threads engagement and thread lubricant applied. Only Fiske Brothers L0113-001 AERO lubricant is allowed.
-

CSA International
 TCE Transmitter in Class I Division 1 (XP) Area with
 TCM Series Flowtube in Class I Division 1 (IS) Area

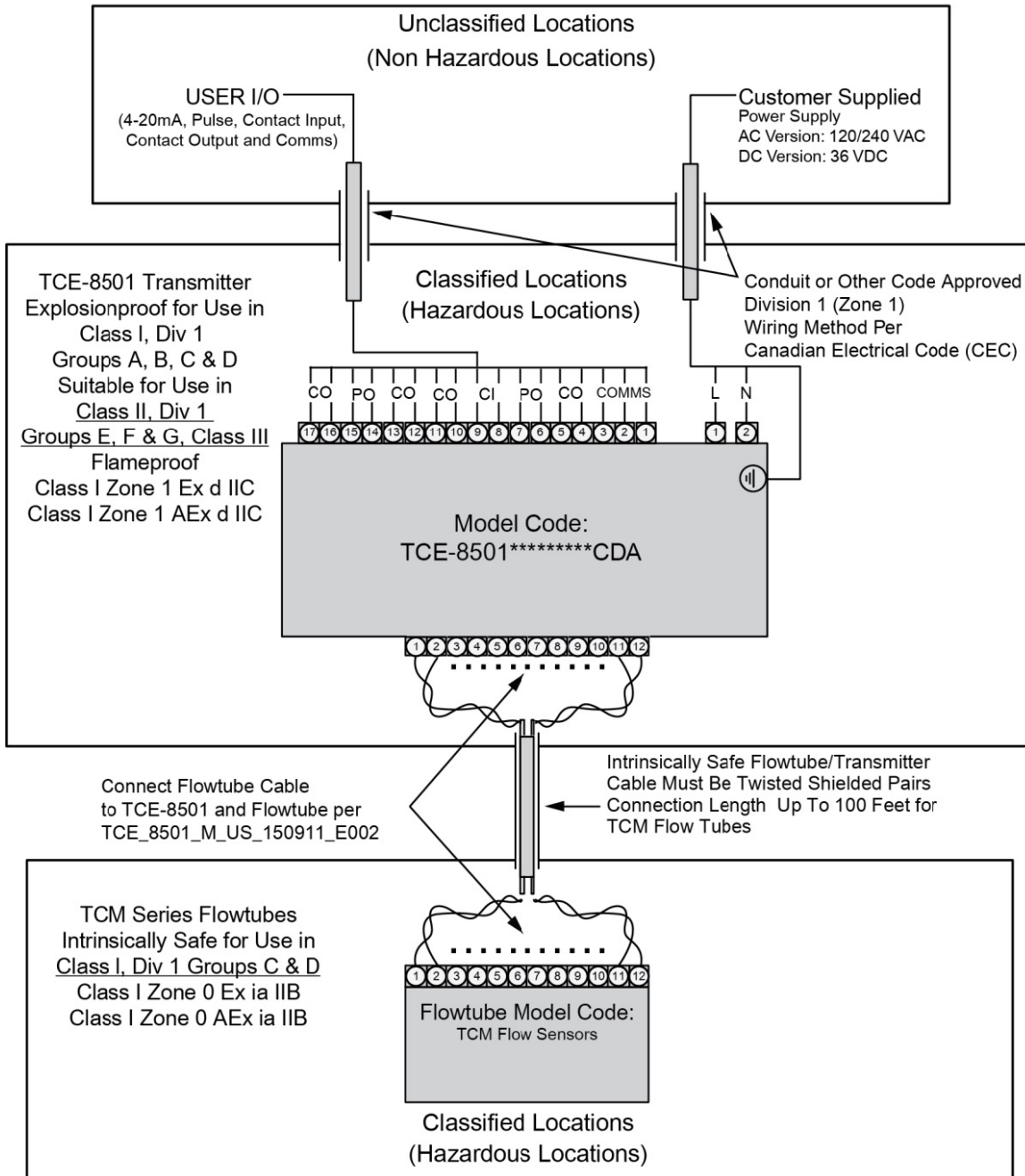


Fig. 5: CSA International, Flow Sensor in Class I, Division 1 (Intrinsic Safety) and Transmitter in Class I Division 1 (Explosionproof)

2. Contact

TRICOR web page

www.tricorflow.com

Sales

America:

AW-Lake Company
8809 Industrial Drive
Franksville, WI 53126
USA

Tel.: +1 800-850-6110

sales@aw-lake.com

www.aw-lake.com

China:

KEM Flow China
Rm. 430, JInYuan Building, No. 36 BeiyuanLu,
CN- Chaoyang District, Beijing 100012
P.R.CHINA

Tel.:+86 10 84929567 / +86 10 84929577

Fax:+86 10 52003739

info@kem-kueppers.com

www.kem-kueppers.cn

Southeast Asia:

KEM Küppers Elektromechanik GmbH
Representative Office (RO) Singapore
1003 Bukit Merah Central #06-32
Singapur 159836

UEN: T15RF0080G

Tel.: +65 6274 1130

info@kem-kueppers.com

www.kem-kueppers.cn

Europe:

KEM Küppers Elektromechanik GmbH
Liebigstraße 5
DE-85757 Karlsfeld
Germany

Tel.: +49 8131 593910

info@kem-kueppers.com

www.kem-kueppers.com

Manufacturer

KEM Küppers Elektromechanik GmbH

Liebigstraße 5
DE-85757 Karlsfeld
Germany

Tel.: +49 8131 593910

info@kem-kueppers.com

www.kem-kueppers.com

AW-Lake Company

8809 Industrial Drive
Franksville, WI 53126
USA

Tel.: +1 800-850-6110

sales@aw-lake.com

www.aw-lake.com

Original KEM document: TCE_8501_Safety_M_EN_170308_E001
Copyright KEM, Subject to change without notice